

CELLOMETER®

(Disposable Cell Counting Chamber)

Cellometer® Description

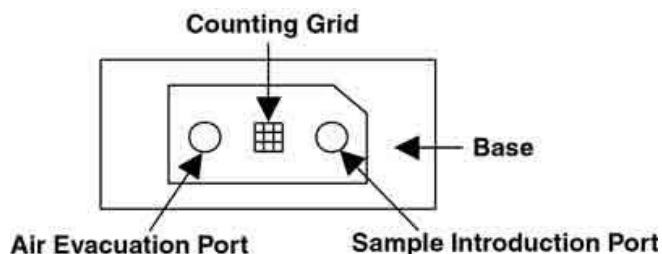


Figure 1. Schematic drawing of a Cellometer®

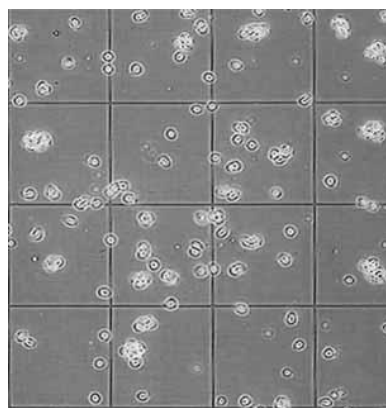


Figure 2. Cellometer® with cells

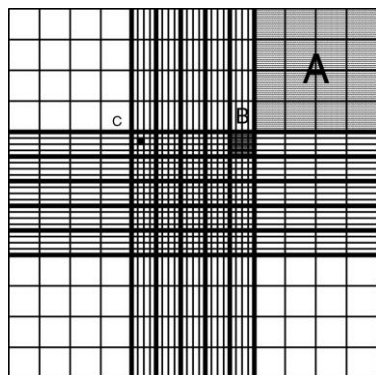


Figure 3. Counting grid: the liquid volume
Under square A, B, & C are
 1×10^{-4} ml, 4×10^{-6} ml, and 2.5×10^{-7} ml
respectively

Procedure of Use

1. Pipette 15 to 20 μ l cell suspension through sample port.
2. Place Cellometer® under optical microscope.
3. Adjust Focus on both the grid line and the cells.
4. Count cells following standard cell counting procedures.
5. Using the outside line to count the total number of cells found in four of the large corner squares as shown in figure 2. (Total Count)
6. Calculate cell concentration.
Cell concentration =
Dilution factor \times (Total count \div 4) $\times 10^4$
7. Dispose cell counting chamber in bio-waste.

Note: For Research Use Only.



Phone: (978) 327-5340
Fax: (978) 327-5341
E-Mail: info@nexcelom.com
Website: www.nexcelom.com